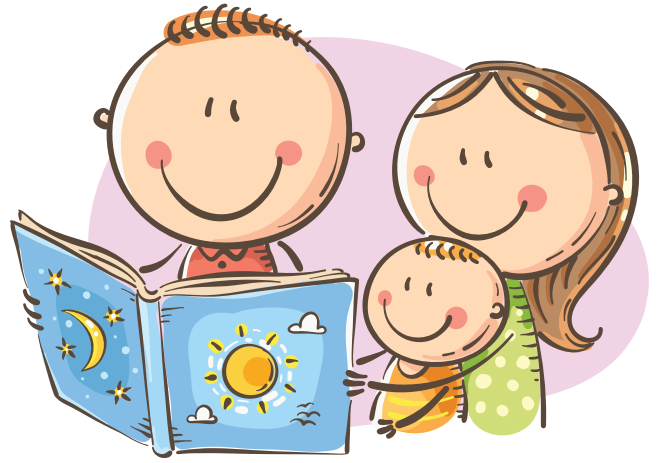


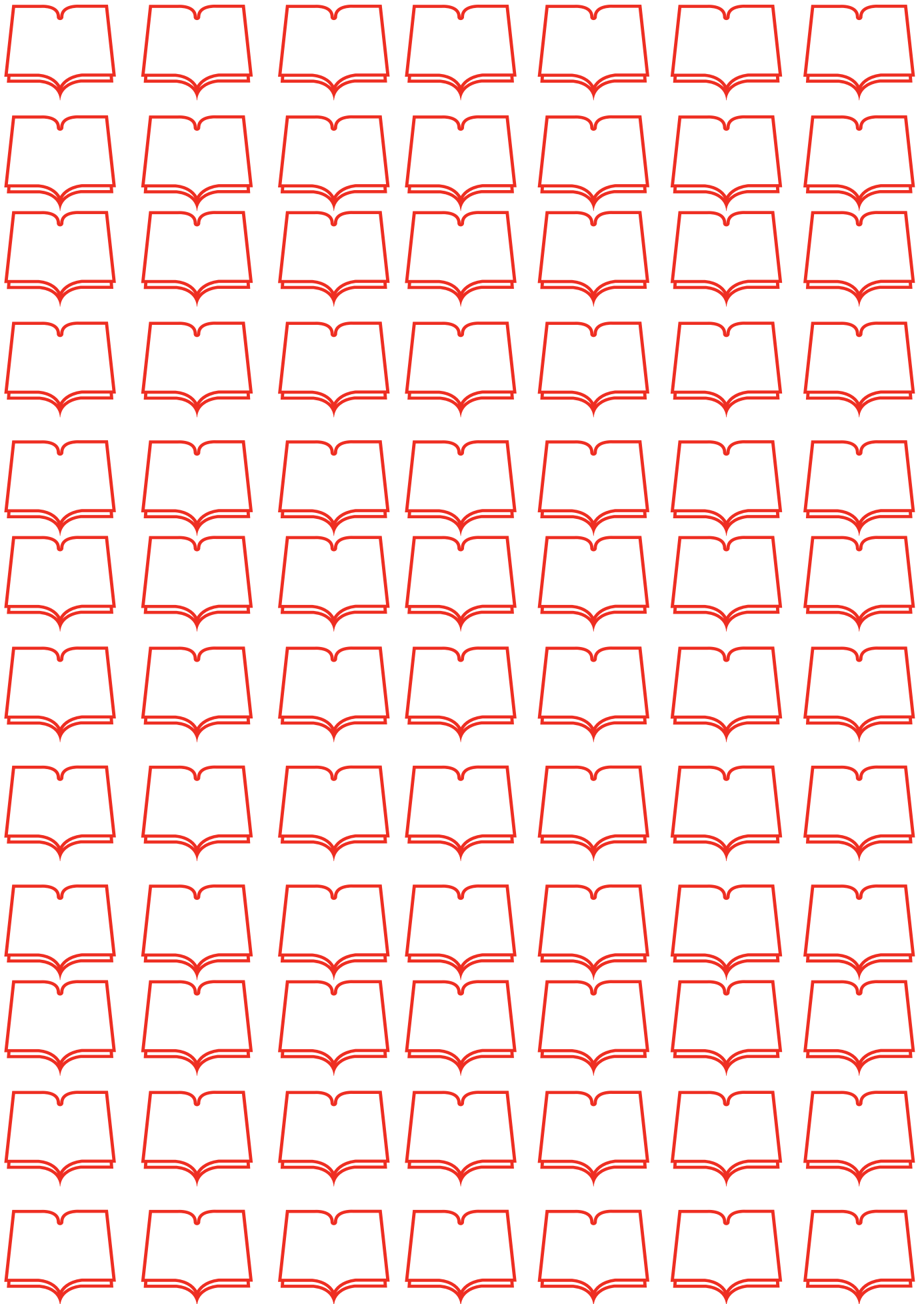
1000 BOOKS BEFORE SCHOOL



| | | | | | | |
|--|--|--|--|--|--|--|
| | | | | | | |
| | | | | | | |
| | | | | | | |
| | | | | | | |
| | | | | | | |
| | | | | | | |
| | | | | | | |
| | | | | | | |
| | | | | | | |
| | | | | | | |



Use this sheet to keep a tally for each book read.
Each time you visit the library hand this sheet over to
be recorded by library staff.



Filled this sheet up? Library staff will be happy to provide you with additional sheets. Or download a tally sheet from www.uhrl.nsw.gov.au